

【INSTALLATION GUIDE】

Mounting instructions

Install Into Reinforced wall only. Do NOT INSTALL DIRECTLY INTO DRYWALL

Materials and tools:



Electric drill



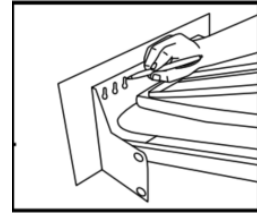
Oily pen



3" screw*6pcs

Step 1

Hold ironing board base in place in the desired location and mark the top 4 Holes and the bottom 2 Holes (this step requires 2 people)

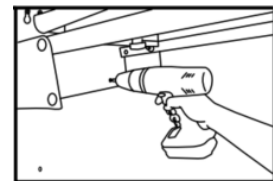


Step 2

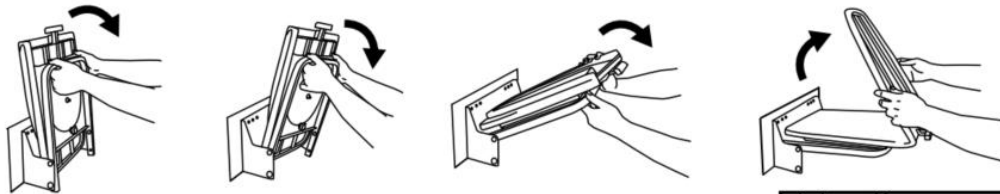
Drill the 4 top screws into the marked spots $\frac{3}{4}$ of the way in, mount the ironing board then finish screwing in the screws.

Step 3

Install screws into the holes on the bottom of the Ironing board base.



Fold and unfold the board as below:



Loosen the wheel under the ironing board to rotate the board and tighten to lock the board in place

